

The Zimbabwe Resilience Building Fund (ZRBF) High Frequency Monitoring Bulletin



Sweden
Sverige



Bulletin # 44: January 2021

Note to the Reader

The purpose of the ZRBF High Frequency Monitoring Bulletin is to avail real-time data and information on identified and agreed trigger indicators for the activation of the crisis modifier, performance monitoring, programming and other decisions for the overall ZRBF adaptive programme management. Information presented in this bulletin is readily available in the HFM Online Database, accessible using this url <https://197.155.231.242/undp/ZRBF/HFMS/>

The bulletin contains official information for December that was collected from various sources by ZRBF partners and analysed by ZRBF PMU. The High Frequency Monitoring Bulletin is a product of collaboration between the ZRBF Partners and other government agencies. For questions and comments regarding this bulletin, kindly get in touch with Vhusomuzi Sithole (vhusomuzi.sithole@undp.org), Fadzai Ncube (fadzai.ncube@undp.org) and Shupikayi Zimuto (shupikayi.zimuto@undp.org).

UNDP Zimbabwe,

ZRBF Programme Management Unit

Arundel Office Park, Block 9,

Norfolk Rd, Mt. Pleasant,

Harare, Zimbabwe

+263 4 338836-44

Website: www.zrbf.co.zw

Database: <https://197.155.231.242/undp/ZRBF/HFMS/index.php>

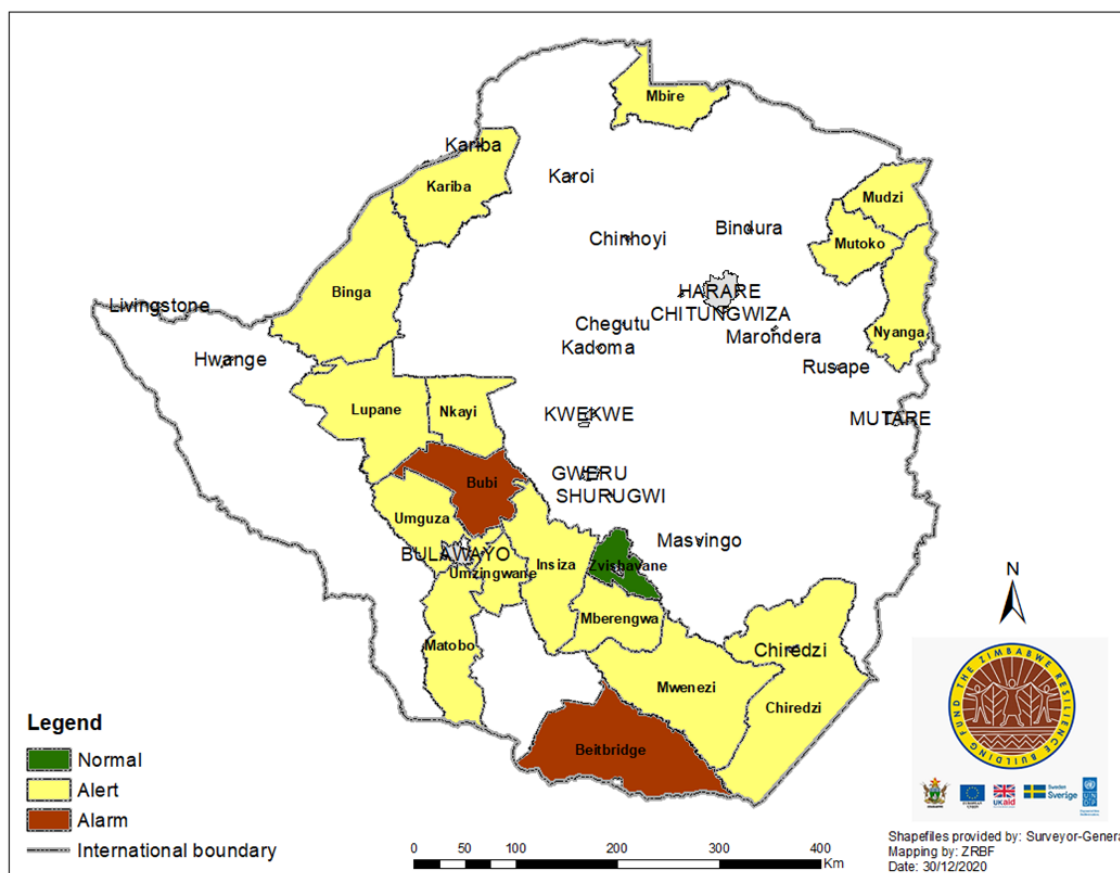


Table of Contents

| | |
|---|----|
| Note to the Reader..... | 2 |
| 1. Overall Results and Implications..... | 4 |
| 2. Status Update Macro-Indicators | 6 |
| 2.1 Vegetation Condition Index..... | 6 |
| 3.2 Real-time water levels in major rivers | 6 |
| 3. Summary of Broad Classification: Micro Trigger Indicators..... | 7 |
| 4. Detailed Micro Trigger Indicators Update and Proposed Mitigatory Activities..... | 8 |
| 4.1. Biophysical Trigger indicators | 8 |
| 4.2 Production Trigger indicators..... | 9 |
| 4.3 Access Trigger Indicators..... | 11 |
| 4.4 Trade Trigger Indicators | 12 |

1. Overall Results and Implications

Summary Classification



Key Highlights

According to the High Frequency Monitoring (HFM) classification, 15 districts were in the Alert category while two (2) were in Alarm and one (1) was in the Normal Category. The following micro indicators, which are in the Emergency Stage, drove this overall classification.

- Rainfall in Nyanga and Umguza
- Reported cases of livestock diseases in Chiredzi and Mberengwa
- Reported cases of waterborne diseases in Nkayi and Umzingwane
- Vegetation Condition Index in Beitbridge, Kariba, Lupane, Matobo, Mbire and Nkayi

Table 1 below summarises these trends in the overall classification of all 18 districts over the last 12 months.

Table 1: Overall Classification of the 18 districts

| Month | Beitbridge | Bubi | Binga | Chiredzi | Insiza | Kariba | Lupane | Matobo | Mberengwa | Mbire | Mudzi | Mutoko | Mwenezi | Nkayi | Nyanga | Umguzu | Umzingwane | Zvishavane |
|----------|------------|-------|-------|----------|---------|--------|--------|--------|-----------|-------|-------|--------|---------|-------|--------|--------|------------|------------|
| Dec-20 | Alarm | Alarm | Alert | Alert | Alert | Alert | Alert | Alert | Alert | Alert | Alert | Alert | Alert | Alert | Alert | Alert | Alert | Normal |
| Nov-20 | Alert | Alert | Alert | Alert | Alert | Alert | Alert | Alert | Alert | Alert | Alert | Alert | Alert | Alert | Alert | Alert | Alert | Alert |
| Oct-20 | Alarm | Alarm | Alert | Alarm | Alert | Alert | Alert | Alert | Alert | Alert | Alert | Alert | Alarm | Alert | Alert | Alert | Alarm | Alert |
| Sept-20 | Alert | Alert | Alert | Alert | Alert | Alert | Alert | Alert | Alert | Alert | Alert | Alert | Alert | Alert | Alert | Alert | Alert | Alert |
| Aug-20 | Alert | Alert | Alert | Alert | Alert | Alert | Alert | Alert | Alert | Alert | Alert | Alert | Alert | Alert | Alert | Alert | Alert | Alert |
| July-20 | Alert | Alarm | Alert | Alarm | Alert | Alert | Alert | Alert | Alert | Alert | Alert | Alert | Alarm | Alarm | Alert | Alert | Alarm | Alarm |
| June 20 | Alert | Alert | Alert | Alert | Alert | Alert | Alert | Alert | Alert | Alert | Alert | Alert | Alert | Alert | Alert | Alert | Alert | Alert |
| May-20 | Alert | Alert | Alert | Alert | Alert | Alert | Alert | Alert | Alert | Alert | Alert | Alert | Alert | Alert | Alert | Alert | Alert | Alert |
| April-20 | Alarm | Alert | Alert | Alert | Alert | Alert | Alert | Alert | Alarm | Alert | Alert | Alert | Alert | Alert | Alarm | Alert | Alert | Alarm |
| Mar-20 | Alarm | Alert | Alert | Alert | Normal | Alert | Alert | Alert | Alert | Alert | Alert | Alert | Alert | Alert | Alarm | Alert | Alert | Alert |
| Feb-20 | Alert | Alert | Alert | Alert | No data | Alert | Alert | Alert | Alert | Alert | Alert | Alert | Alert | Alert | Alert | Alert | Alert | Alert |
| Jan-20 | Alert | Alert | Alert | Alert | Alert | Alert | Alert | Alert | Alert | Alert | Alert | Alert | Alert | Alert | Alert | Alert | Alert | Alert |

2. Status Update Macro-Indicators

2.1 Vegetation Condition Index

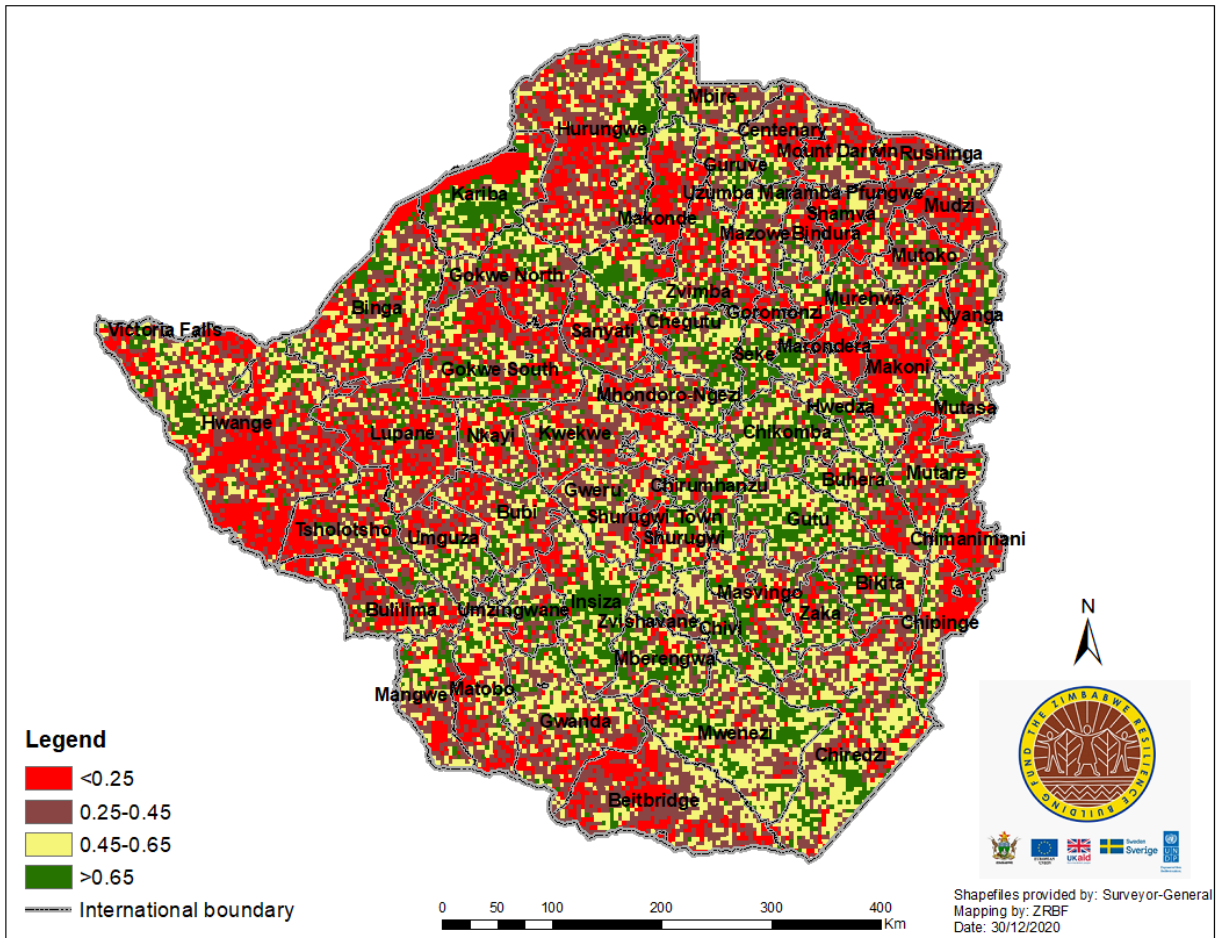


Figure 1: Vegetation Condition Index for December 2020

The Vegetation Condition Index is still low in most districts culminating in the following classification:

- a) Alert (Insiza, Nyanga, Umguza, Umzingwane and Zvishavane)
- b) Alarm (Binga, Bubi, Chiredzi, Mberengwa, Mudzi, Mutoko and Mwenezi), and
- c) Emergency (Beitbridge, Kariba, Lupane, Matobo, Mbire and Nkayi)

| District | VCI value | Crisis Modifier |
|------------|-----------|-----------------|
| Beitbridge | 0.23 | Emergency |
| Binga | 0.27 | Alarm |
| Bubi | 0.29 | Alarm |
| Chiredzi | 0.36 | Alarm |
| Insiza | 0.51 | Alert |
| Kariba | 0.21 | Emergency |
| Lupane | 0.19 | Emergency |
| Matobo | 0.17 | Emergency |
| Mberengwa | 0.34 | Alarm |
| Mbire | 0.21 | Emergency |
| Mudzi | 0.33 | Alarm |
| Mutoko | 0.39 | Alarm |
| Mwenezi | 0.40 | Alarm |
| Nkayi | 0.21 | Emergency |
| Nyanga | 0.45 | Alert |
| Umguza | 0.46 | Alert |
| Umzingwane | 0.45 | Alert |
| Zvishavane | 0.50 | Alert |

2.2 Real-time water levels in major rivers

Water levels figures were not yet available at the time of publication.

3. Summary of Broad Classification: Micro Trigger Indicators

The micro-indicator data from the 18 reported districts reflects that conditions in the four broad classes of indicators, biophysical, production and access indicators, are mostly in the Alert category.

- Biophysical indicators are in Alarm in three districts up from one district in November. This is mainly due to the above normal rainfalls received in most of the districts. 12 districts are in the Alert category up from eight (8) in the previous month also due to the excessive rains, The rest of the three (3) districts are in the Normal Stage for Bio Physical indicators
- Production indicators in eight (8) districts are in the Alert category no change from the previous month. Livestock body condition is improving in all districts, however, there is an increase in reported cases of lumpy skin in Zvishavane and Mberengwa.
- Access indicators are in the Alert category in (7) districts down from six districts in Alarm in the previous month. The rest of the districts are in the Normal stage These categorisations are mainly due to an improvement in, distance to water sources for households and water for livestock trekking distances as well as the number of meals per day.
- Trade indicators are in the Alert category in Mbire district only, attributed to the

Table 2: Trigger Indicator summary for December 2020

| District | Biophysical Indicators | Production Indicators | Access Indicators | Trade Indicators |
|------------|------------------------|-----------------------|-------------------|------------------|
| Beitbridge | Alert | Normal | Alert | Normal |
| Binga | Alert | Normal | Alert | No data |
| Bubi | Alert | Alert | Alert | Normal |
| Chiredzi | Alert | Normal | Alert | Normal |
| Insiza | Alert | Normal | Alert | Normal |
| Kariba | Normal | Alert | Alert | Normal |
| Lupane | Alert | Normal | Alert | Normal |
| Matobo | Alert | Normal | Alert | Normal |
| Mberengwa | Alert | Alert | Alert | Normal |
| Mbire | Alert | Alert | Alert | Alert |
| Mudzi | Normal | Normal | Alert | Normal |
| Mutoko | Alert | Normal | Alert | Normal |
| Mwenezi | Alert | Normal | Alert | Normal |
| Nkayi | Alert | Alert | Normal | Normal |
| Nyanga | Alarm | Alert | Alarm | Normal |
| Umguzha | Alarm | Alert | Alert | Normal |
| Umzingwane | Alarm | Alert | Alert | Alarm |
| Zvishavane | Normal | Normal | Normal | Normal |

4. Detailed Micro Trigger Indicators Update and Proposed Mitigatory Activities

4.1. Biophysical Trigger indicators

Table 3: Biophysical trigger indicator summary for December 2020

| Biophysical Indicators | | | | |
|------------------------|-----------------------|----------|------------------------|-----------------------|
| District | Pastures Availability | Rainfall | State of Water Sources | Mid-season Dry Spells |
| Beitbridge | 4 | 321 | 4 | 4 |
| Binga | 4 | 286.4 | 3 | 4 |
| Bubi | 3 | No data | 3 | 3 |
| Chiredzi | 4 | 388.75 | 4 | 4 |
| Insiza | 4 | 250.4 | 3 | 4 |
| Kariba | 4 | 186.5 | 4 | 4 |
| Lupane | 4 | 193.3 | 3 | 4 |
| Matobo | 4 | 119.5 | 3 | 4 |
| Mberengwa | 3 | 312.33 | 3 | 3 |
| Mbire | 3 | 183.8 | 3 | 3 |
| Mudzi | 4 | 248.83 | 4 | 4 |
| Mutoko | 4 | 426 | 3 | 4 |
| Mwenezi | 3 | 291.31 | 3 | 3 |
| Nkayi | 3 | 500 | 3 | 3 |
| Nyanga | 3 | 650 | No data | 3 |
| Umguza | 3 | 526 | 3 | 3 |
| Umzingwane | 3 | 468 | 2 | 3 |
| Zvishavane | 4 | 210.63 | 4 | 4 |

- Pasture availability is in the Alert category in 8 districts a vast improvement from the Emergency and Alarm categorisations of November and December, due to the above-normal rainfall received which resuscitated the pastures. The rest of the 10 districts are in the normal category with pastures expected to last more than 6 months
- Umzingwane district is in the Alarm category for State of water sources where less than 30%-65% of boreholes are functional. This is an improvement from the previous month where less than 30% of the boreholes were functional. 11 districts are in the Alert category an improvement from Alarm in the previous month and four (11). The improvement is attributed to the WASH grant and CRISIS modifier activities which enabled an increase in the number of boreholes rehabilitated across the 18 districts
- All 16 Districts recorded excessive rainfall this month, except for Bubi which did not report on rainfall data
- All districts were in the normal for mid-season dry spells.

Proposed Mitigation Activities

- Farmers are encouraged to apply agile grazing plans; plans for those in the alert category should ensure efficient use of available grazing forage, while plans for those in the normal category should take this opportunity to move livestock based on forage growth that promote better pasture forage utilization, and possibly extend the grazing season.
- ZRBF consortia in collaboration with DDF and local water committees should carry out assessments on the functionality of water points with priority being given to Umzingwane, and ensure resources are allocated for the rehabilitation of strategic water points.

4.2 Production Trigger indicators

Table 4: Production trigger indicator summary for December 2020

| Production Indicators | | | | | | |
|-----------------------|-----------------------------------|----------------|--------------------------|---------------------------------|--------------------------------------|---------------------------------------|
| District | Crops Pest and Diseases Outbreaks | Crop Condition | Livestock Body Condition | Number Livestock Poverty Deaths | Reported Cases of Livestock Diseases | Reported Cases of Waterborne Diseases |
| Beitbridge | 1 | 4 | 3 | 0 | 54 | 0 |
| Binga | 1 | 3 | 3 | 0 | 52 | 0 |
| Bubi | 3 | 3 | 2 | 5 | 22 | 100 |
| Chiredzi | 2 | 3 | 3 | 17 | 6 | 0 |
| Insiza | 3 | 3 | 3 | 0 | 0 | 0 |
| Kariba | 2 | 4 | 3 | 0 | 69 | 63 |
| Lupane | 3 | 3 | 3 | 0 | 0 | 0 |
| Matobo | 2 | 4 | 3 | 0 | 16 | 0 |
| Mberengwa | 2 | 3 | 2 | 0 | 526 | 8 |
| Mbire | 2 | 3 | 2 | 0 | 64 | 39 |
| Mudzi | 2 | 4 | 3 | 0 | 4 | 0 |
| Mutoko | 2 | 4 | 3 | 0 | 65 | 0 |
| Mwenezi | 3 | 3 | 2 | 0 | 8 | 6 |
| Nkayi | 2 | 4 | 3 | 6 | 3 | 189 |
| Nyanga | 2 | 4 | 3 | 68 | 13 | 0 |
| Umguzu | 2 | 4 | 2 | 8 | 5 | 267 |
| Umzingwane | 3 | 3 | 3 | 1 | 3 | 57 |
| Zvishavane | 2 | 3 | 3 | 0 | 228 | 0 |

- Beitbridge and Binga Districts are in the Alarm category for Crop Pests and diseases whilst 11 other districts are in the Alarm category due to FAW, armoured cricket and crop diseases caused by excessive rains. Crop condition is normal for all 18 districts.

- 106 livestock poverty deaths have been reported for this month down from 1983 reported in the previous month, Nyanga district is the only district in Alarm with 68 deaths; Five districts are in Alert and the rest is normal. There has been a vast improvement in livestock body condition, pasture availability and water for livestock trekking distance which has contributed to the reduction in livestock poverty deaths. Interventions such as fodder production and preservation, subsidised livestock feed have also been key in the reduction of livestock poverty deaths.
- There has been a significant improvement for livestock body condition which is in Alert from five (5) districts and normal for the rest as compared to Alarm in eight districts and Alert in the previous month. This is attributed to the good rainfall received which resuscitated the pastures as well as a reduction in water for livestock trekking distance caused by filling up of water sources as well as the rehabilitation of boreholes and construction of livestock watering troughs across the 18 districts.
- Two (2) districts, Mberengwa and Chiredzi are in emergency for reported cases of livestock diseases. Mberengwa reported 52 cases of lumpy skin, 322 cases of ephemeral diseases and Chiredzi reported 6 cases of Anthrax. Zvishavane district is in the Alarm stage with 220 cases of fowl pox. 10 districts are in the Alert category with fowl pox, heartwater, Newcastle, and lumpy skin being some of the cases reported.
- Nkayi and Umguza districts are in the Emergency category for waterborne diseases with high numbers of reported cases of Dysentery and common diarrhoea. Four districts are in the Alarm category and two districts are in Alert. This is a deterioration from the previous month where all 18 districts were in the normal category.

Proposed Mitigation Activities

- To control pests effectively, farmers are advised to scout their crop daily in order to detect any pest invasion early. In consultation with agriculture extension workers, organic or biological methods of control should also be considered especially in the second stage of development (larvae).
- To reduce risk of disease, livestock development committees in collaboration with Department of Veterinary Services should encourage farmers to increase frequency for cattle dipping to twice a week during this period. Poultry farmers are advised to improve sanitation, including destroying mosquito breeding sites around their environment. They should also ensure that their chickens always have access to adequate feed and water. Fowl vaccines can also be considered to control aggressive pecking.
- District civil protection units should activate local DRM committees particularly in Nkayi and Umguza to be on high alert for water borne diseases. Working with the MoHCC, key messages around safe water storage and use, and good sanitation practices should be disseminated targeting high risk areas.

4.3 Access Trigger Indicators

Table 5: Access trigger indicator summary for December 2020

| Access Indicators | | | | |
|-------------------|---|-----------------|-------------------|---------------------------------------|
| District | Distances to Water Sources for Households | Number of Meals | School Attendance | Water for Livestock Trekking Distance |
| Beitbridge | 2 | 2 | No data | 2 |
| Binga | No data | 2 | No data | 0.5 |
| Bubi | 2 | 2 | No data | 3 |
| Chiredzi | 1.11 | 2 | 2 | 1.35 |
| Insiza | 2 | 2 | No data | 1 |
| Kariba | No data | 2 | No data | 2 |
| Lupane | 2 | 2 | No data | 1 |
| Matobo | 3 | 2 | No data | 1 |
| Mberengwa | 1.14 | 2 | No data | 1.61 |
| Mbire | No data | 2 | No data | 1 |
| Mudzi | 1.5 | 2 | No data | 0.55 |
| Mutoko | 1 | 2 | 2 | 0.5 |
| Mwenezi | 1.54 | 2 | 2 | 1.1 |
| Nkayi | 1 | 2 | No data | 1 |
| Nyanga | 2 | No data | No data | 6 |
| Umguzu | 2.5 | 2 | No data | 2.5 |
| Umzingwane | 2 | 2 | No data | 2.5 |
| Zvishavane | 0.84 | 2 | No data | 0.75 |

- Distance to water sources is in Alert in 12 districts. There are no districts in Alarm, an improvement from five in the previous month. The Wash Grant and crisis modifier activities enabled an increase in the number of boreholes drilled, rehabilitated and solarised as well as piped water schemes which brought water closer to the communities.
- Seventeen districts are in the Alert category for the number of meals a day an improvement from the previous month where five (5) districts were in the Alarm category with 1 meal a day.
- Water for livestock trekking distance is in Alarm one (1) district, Nyanga down from four (4) in the previous month. Five (5) districts are in the Alert stage with livestock trekking between 2-4 km for water. A significant improvement has been noted as there are no districts in Emergency this month.
- There was no school attendance data due to the lockdown.

Proposed Mitigatory Activities

The rain season has improved availability of seasonal fruits and other leafy vegetables which had a positive effect on the frequency of meals people had in target areas. To sustain this, ZRBF should work with interested local women's groups to enhance their understanding of indigenous vegetables: gathering and propagation practices, handling, storage, preparation techniques and nutritional value. This will ensure access to local and nutritious foods. Traditional leaders are also encouraged to activate local structures to set up community grain safety net initiatives.

4.4 Trade Trigger Indicators

Table 6: Trade trigger indicator summary for December 2020

| District | Cattle Price | Goat Price | Indigenous Chicken Price | Maize Price | Pearl Millet Price | Rapoko Price | Sheep Price | Sorghum Price |
|------------|--------------|------------|--------------------------|-------------|--------------------|--------------|-------------|---------------|
| Beitbridge | 321 | 40 | 6 | 7 | 7 | No data | 50 | 7 |
| Binga | No data | No | No data | No | No data | No data | No data | No data |
| Bubi | 350 | 60 | 5 | No | No data | No data | No data | No data |
| Chiredzi | 321 | 35 | 5.6 | 7 | 7 | 10 | 50 | 6 |
| Insiza | 350 | 50 | 6 | 7 | 7 | 10 | 60 | 6 |
| Kariba | | No | | | No data | No data | 30 | |
| Lupane | 300 | 20 | 4 | 5 | No data | No data | 35 | 4 |
| Matobo | 400 | 30 | 6 | 7 | 7 | 10 | 50 | 7 |
| Mberengwa | 400 | 45 | 6 | 6 | 7 | 9 | 50 | 6 |
| Mbire | 400 | 35 | 5 | 7 | 8 | 10 | 60 | 7 |
| Mudzi | 230 | 20 | 4 | 5 | No data | No data | 35 | 5 |
| Mutoko | 260 | 30.59 | 4.25 | 7 | 7 | 12 | 50.7 | 6 |
| Mwenezi | 325 | 30 | 5 | 8 | 10 | 11 | 45 | 8 |
| Nkayi | 347 | 37 | 6.5 | 7.5 | 7 | 9 | 40 | 6 |
| Nyanga | 350 | 50 | 6 | 10 | 6 | 10 | 60 | No data |
| Umguza | 350 | 35 | 5 | 5 | 8 | 12 | 80 | 8 |
| Umzingwane | 250 | 35 | 10 | 6 | No data | No data | No data | No data |
| Zvishavane | 500 | 35 | No data | No | No data | No data | No data | No data |

The trade indicators were converted to the USD using the official exchange rate as of 30 December of 81.786 ZWD to 1 USD. However majority Of the districts reported prices in USD and ZAR Rand this month as markets are favouring trade in foreign currency over the local currency.

- Cattle prices are in Alert in three (3) districts down from five (5) in November. The rest of the 12 districts are in the normal category, signalling favourable conditions in the markets.
- Goat prices are in the Alert category in Mudzi and Lupane where a goat is selling for 20 USD,
- Indigenous Chickens, maize, pearl millet and sorghum prices are in the Normal category for all the districts.
- Rapoko prices are in Alert in two districts, an improvement from five (5) in the previous month.
- Most of the Alerts in commodity prices were caused by the changes in the exchange rate as the ZW dollar weakened against the USD. Farmers have however increased their prices in ZWD to match the variations.

Proposed Mitigatory Activities

Both livestock and crop value chains in the target districts need to be strengthened to allow farmers to get viable prices for their produce. Farmers are also encouraged to do a market analysis so that they get value for money for their products by taking advantage of niche markets where possible.