

The Zimbabwe Resilience Building Fund (ZRBF) High Frequency Monitoring Bulletin

Bulletin # 7: November 2017



1. Note to the Reader

The purpose of the ZRBF High Frequency Monitoring Bulletin is to timely avail real time data and information on identified and agreed trigger indicators for the activation of the crisis modifier, performance monitoring, programming and other decisions for the overall ZRBF adaptive programme. ZRBF identified a set of indicators to monitor these shocks: drought, floods, crop pests and diseases, animal pests and diseases, waterborne diseases, health, as well as crop and animal prices.

The bulletin contains official information for the month of October 2017 collected from various sources by ZRBF partners and analysed by ZRBF PMU. The High Frequency Monitoring Bulletin is a product of collaboration between the ZRBF Partners and other government agencies. For questions and comments regarding this bulletin, kindly get in touch with either Vhusomuzi Sithole (vhusomuzi.sithole@undp.org) or Rufael Fassil (rufael.fassil@undp.org).

UNDP Zimbabwe,

ZRBF Programme Management Unit

Arundel Office Park, Block 7,

Norfolk Rd, Mt. Pleasant,

Harare, Zimbabwe

+263 4 338836-44

Website: www.zrbf.co.zw

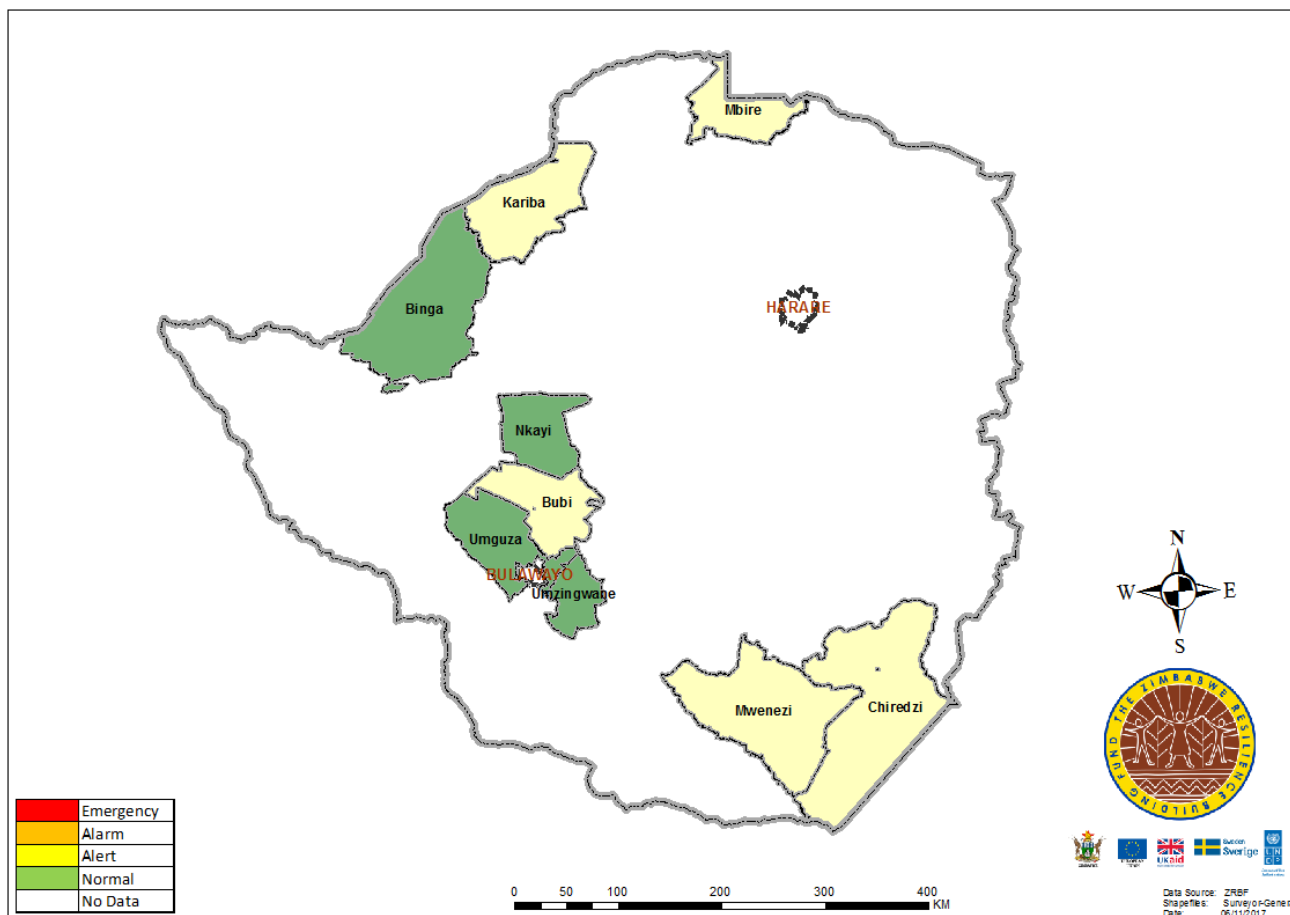


Table of Contents

1. Note to the Reader	1
1. Overall Results and Implications.....	3
2. Macro-Indicators.....	5
2.1 Vegetation Condition Index.....	5
2.2 Real-time water levels in major rivers	5
3. District Reports based on micro-Indicators	6
3.1. Chiredzi District Overview (ECRAS).....	6
3.2. Mwenezi District Overview (ECRAS).....	8
3.3. Bubi District Overview (MELANA).....	10
3.4. Nkayi District Overview (MELANA).....	12
3.5. Umguza District Overview (MELANA).....	13
3.6. Umzingwane District Overview (MELANA).....	15
3.7. Binga District Overview (ZVA).....	17
3.8. Kariba District (ZVA).....	19
3.9. Mbire District Overview (ZVA).....	21
Annex 1: Flood monitoring thresholds for water level in selected rivers.....	23

1. Overall Results and Implications

Summary Classification



Key Highlights

- All ZRBF operational districts, except Binga and Umuza were classified as Alert stage for this reporting period. The overall outlook of the concerned, the field
- Keys that were flagged this month are:
 - Anthrax reported cases in Bubi
 - FMD reported cases in Chiredzi
 - Water borne disease cases in Mwenezi
 - Common diarrhoea reported cases in Mwenezi
 - FMD reported cases in Mwenezi
 - Common diarrhoea reported cases in Nkayi
 - Livestock body condition in Umuza

Implications and Actions related to Resilience Programming

Short-term

- Vaccination and treatment of livestock diseases will need to be strengthened in the short-term, mainly in Chiredzi, Mwenezi, and Kariba. THE ZRMU PMU has already raised the issue with relevant government officials but they are yet to come up with a comprehensive response plan for each district.
- Pastures and water sources are deteriorating creating the need for the good pastures management techniques. Livestock advisories need to be prepared covering supplementary feeding as well as destocking to avoid losses. Households with excess livestock may also be advised on selling at appropriate times to avoid losses as the water and situation continue to deteriorate.
- Market linkages in all districts should be accelerated to avoid income loss by the farming households. Districts like Mbire are experiencing very low prices which threaten the viability of both crop and livestock production.

Medium-term

- Communities and households need to prevent veldfires in their areas due to
- In districts such as Kariba and Binga and Beitbridge, the project should facilitate participatory meetings on disposal of livestock during these drier parts of the season.

Long-term

- Continuous monitoring of diseases is called for during the dry season.
- The food situation also need monitoring as some districts are already reporting an average of two meals per day.

2. Macro-Indicators

2.1 Vegetation Condition Index

- The Vegetation Condition Index shows a fair vegetation condition across the districts where ZRBF has projects (See Figures 1 below) except for Binga, Chiredzi and Mwenezi. VCI is used to show the condition of vegetation based on its greenness as captured by satellite imagery.

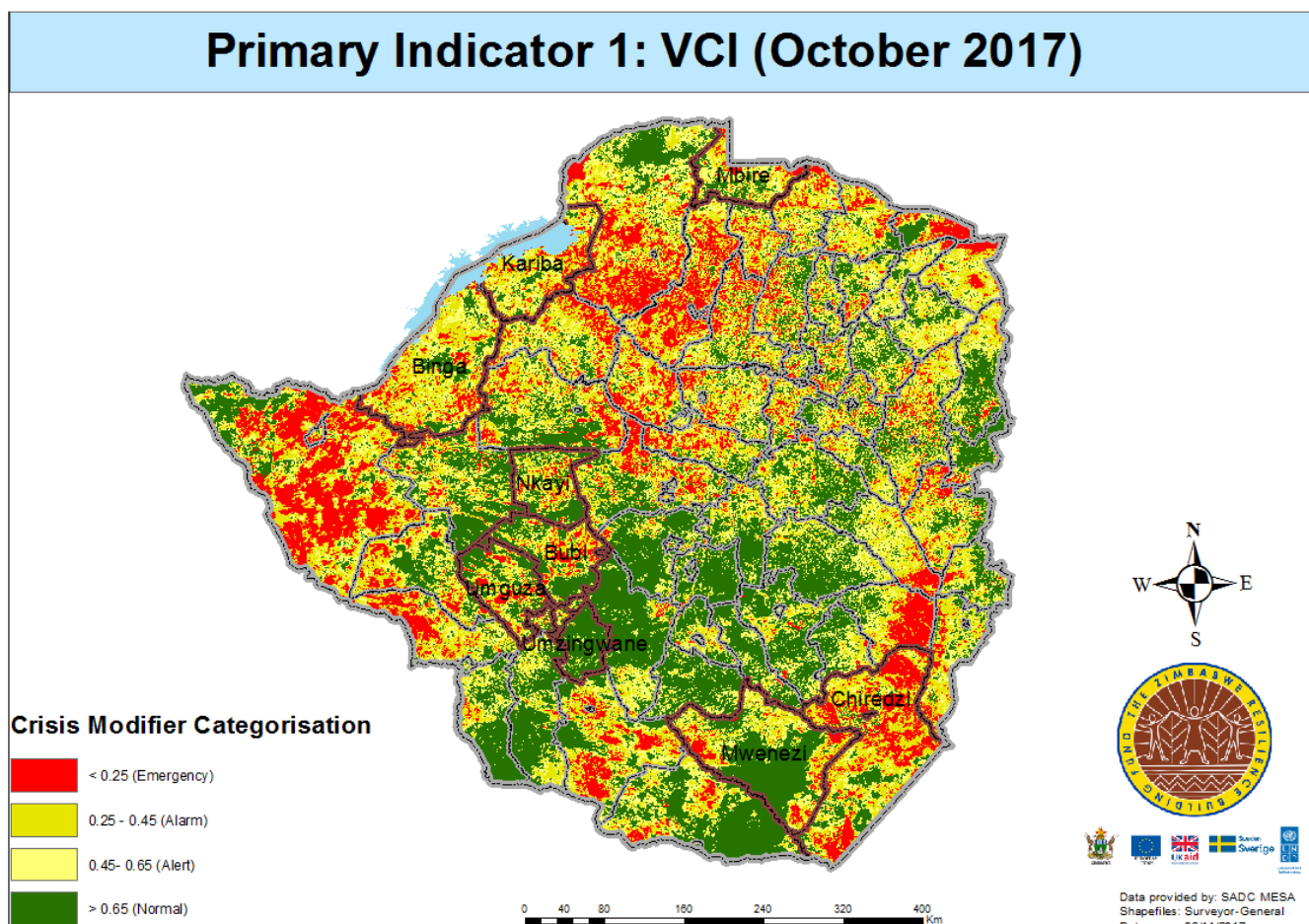


Figure 1: Vegetation condition on the 31st of October 2017 as reflected by VCI

- On average, vegetation condition in ZRBF project districts was generally depleted as shown by low percentages of VCI. When translated to the Crisis Modifier thresholds, this vegetation condition reflects an Alarm stage for 4 districts (Chiredzi, Binga, Kariba and Mbire). Two districts (Bubi and Umguza) were in the Alert stage. According to VCI, only Mwenezi and Umzingwane districts had better vegetation condition as shown by the fairly high VCI values. These two were the only districts in the normal stage.'

2.2 Real-time water levels in major rivers

District	VCI	Crisis Modifier
Chiredzi	0.38	Alarm
Mwenezi	0.66	Normal
Bubi	0.62	Alert
Nkayi	0.72	Normal
Umguza	0.59	Alert
Umzingwane	0.90	Normal
Binga	0.41	Alarm
Kariba	0.33*	Alarm
Mbire	0.48	Alarm

No real-time data for river levels was availed at the time of producing this bulletin.

3. District Reports based on micro-Indicators

3.1. Chiredzi District Overview (ECRAS)

Indicator Class	Crisis Modifier Phase
Biophysical Indicators	Alert
Production Indicators	Alert
Access Indicators	Alert
Trade Indicators	Alert

Biophysical Indicators

- Chiredzi district received no rains this month.
- Pastures were observed to be **critically inadequate** with potential to only last 1-3 months.
- The state of safe water sources was also reported to be **inadequate** with only 30-65% functional boreholes.

Production Indicators

- Irrigated crop condition was **reported to be Fair**.
- Livestock condition was also reported to be **Fair** across the district.
- No cases of livestock poverty were reported.
- No cases of crop pest and diseases were reported in the district.
- There were 262 reported cases of livestock diseases. These cases were for FMD (222), Red water (1), Newcastle (16), Heartwater (9), Rabies (4) and Infectious coryza (20). The majority of FMD cases were reported in wards 2 (89), 23 (60) and 4 (50). The government has put in place measures that include suspension of dipping and cattle movement. The 16 Newcastle cases were reported in Ward 6 of the district.
- 7 cases of common diarrhoea were reported for the month.

Biophysical Indicators	Value	Normal Value
Rainfall	3	< 100
Mid-season dry spells days		0-10
Pastures availability	2	Adequate (4)
State of water sources	2	Available (4)
Production Indicators	Value	Normal Value
Crop condition	3	4-Crops are healthy
Livestock body condition	2	Good (3)
Number livestock poverty deaths	0	0
Crops pest and diseases outbreaks	3	0
Reported Cases of Livestock Diseases	266	0
Reported Cases of Water-Borne Diseases	7	0
Access Indicators	Value	Normal Value
Water for livestock trekking distance	2.48	< 2km
Number of meals	3	3 or more
School attendance	2	Good (4)
Trade Indicators	Value	Normal Value
Cattle price	322	300-650
Goat price	28	30-60
Sheep price	45	40-200
Indigenous chicken price	5	4-10
Maize price	4.82	4-10
Sorghum price	3.59	4-10
Pearl millet price	4.44	4-10
Rapoko price	5.4	10-20

Access Indicators

- Households continued travelling 1km on average to the nearest borehole.
- Livestock travelled an average of 2.48km for water.
- Average number of meals per day remained at three (3) due to harvested food crops.
- Schools attendance remained poor with monthly attendance rate of 30-60%.

Trade Indicators

- The cattle prices remained at an average of \$322/beast. Prices continued to range between \$250 and \$400 in the different wards.
- Goat, sheep and indigenous chicken prices remained at \$28, \$45 and \$5 per animal/bird respectively.
- Maize, sorghum and pearl millet were at \$4.82, \$3.59, and \$4.44 per bucket respectively.
- Rapoko prices decreased slightly from the previous month's \$5.5 to an average of \$5.4 per bucket. Figure 2 below illustrate the trends in crop prices from August 2016 to October 2017.

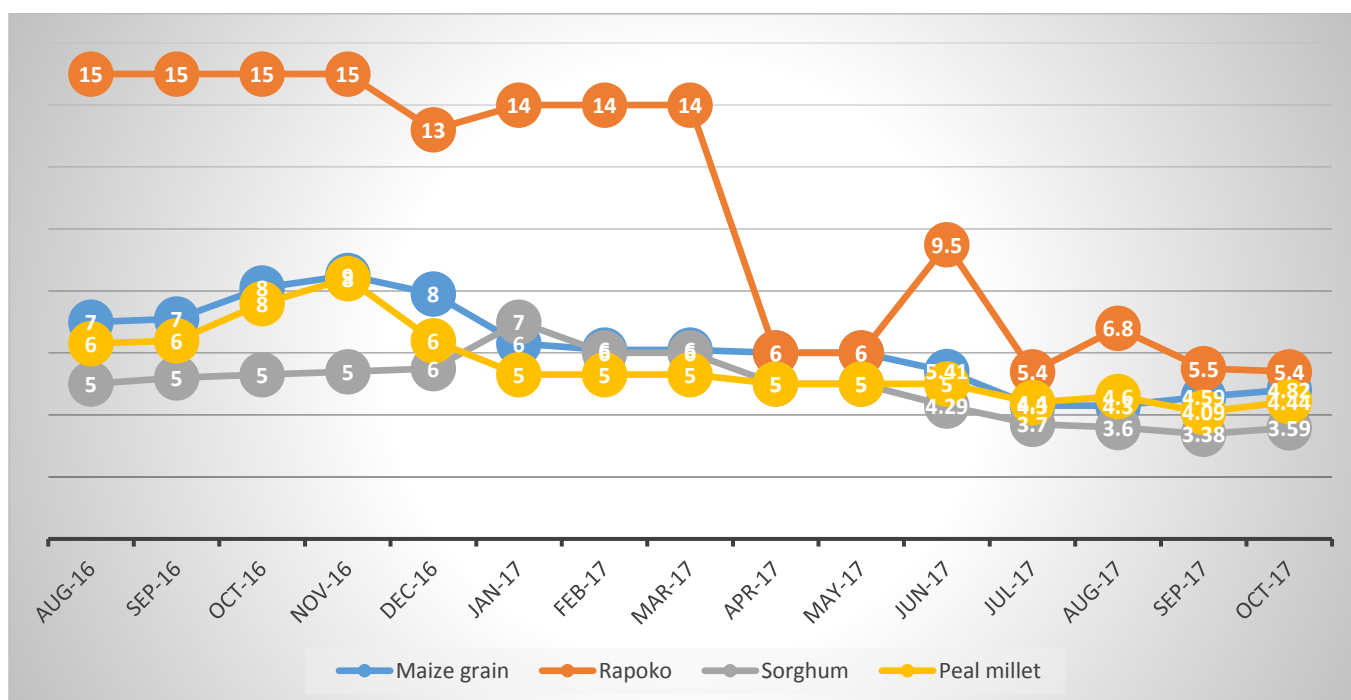


Figure 2: Crop prices in Chiredzi District, October 2017

3.2. Mwenezi District Overview (ECRAS)

Indicator Class	Crisis Modifier Phase
Biophysical Indicators	Alert
Production Indicators	Alert
Access Indicators	Alert
Trade Indicators	Normal

Biophysical Indicators

- Mwenezi district received no rains in October 2017.
- Pastures were observed to be **critically inadequate** with pastures having potential to only last 1-3 months.
- The state of safe water sources was **Inadequate with only 65-85%** functional boreholes.

Production Indicators

- Irrigated crop condition remained **Good** across the district.
- Livestock condition was **fair** across the district.
- No cases of livestock poverty were reported.
- There were no major crop pests and diseases identified in the irrigated plots.
- A total of 167 cases of livestock diseases were reported in the district. Majority of these cases were confirmed FMD cases (163) with wards 6 and 8 reporting new cases. Two cases of redwater were reported in wards 1 and 5.
- A total of 108 cases of common diarrhoea were reported.

Access Indicators

- The distance travelled by households for portable water increased from 1.67km to 1.85km.
- Livestock trekking distance for water was 2.75km which is in the Alert category.
- The number of meals per household remained at 2.
- School attendance was reported to be Average with 60-80% attendance rate.

Biophysical Indicators	Value	Normal Value
Rainfall	15.9	< 100
Mid-season dry spells days		0-10
Pastures availability	2	Adequate (4)
State of water sources	2	Available (4)
Production Indicators	Value	Normal Value
Crop condition	3	4-Crops are healthy
Livestock body condition	2	Good (3)
Number livestock poverty deaths	0	0
Crops pest and diseases outbreaks	3	0
Reported Cases of Livestock Diseases	165	0
Reported Cases of Water-Borne Diseases	108	0
Access Indicators	Value	Normal Value
Distance to water sources for households	1.85	
Water for livestock trekking distance	2.75	< 2km
Number of meals	2	3 or more
School attendance	3	Good (4)
Trade Indicators	Value	Normal Value
Cattle price	333	300-650
Goat price	30	30-60
Sheep price	53	40-200
Indigenous chicken price	5	4-10
Maize price	4.79	4-10
Sorghum price	3.54	4-10
Pearl millet price	3.38	4-10
Rapoko price	9	10-20

Trade Indicators

- The cattle prices were at average of \$333/beast.
- Goat and sheep prices were at \$30 and \$53 per animal respectively.
- Indigenous chicken prices were averaging \$5 per bird in the district.
- Maize, sorghum and pearl millet were at \$4.79, \$3.54, and \$3.38 per bucket respectively.
- Rapoko prices was selling at an average of \$9 per bucket. Trends in Mwenezi’s crop prices are shown in Figure 3 below.

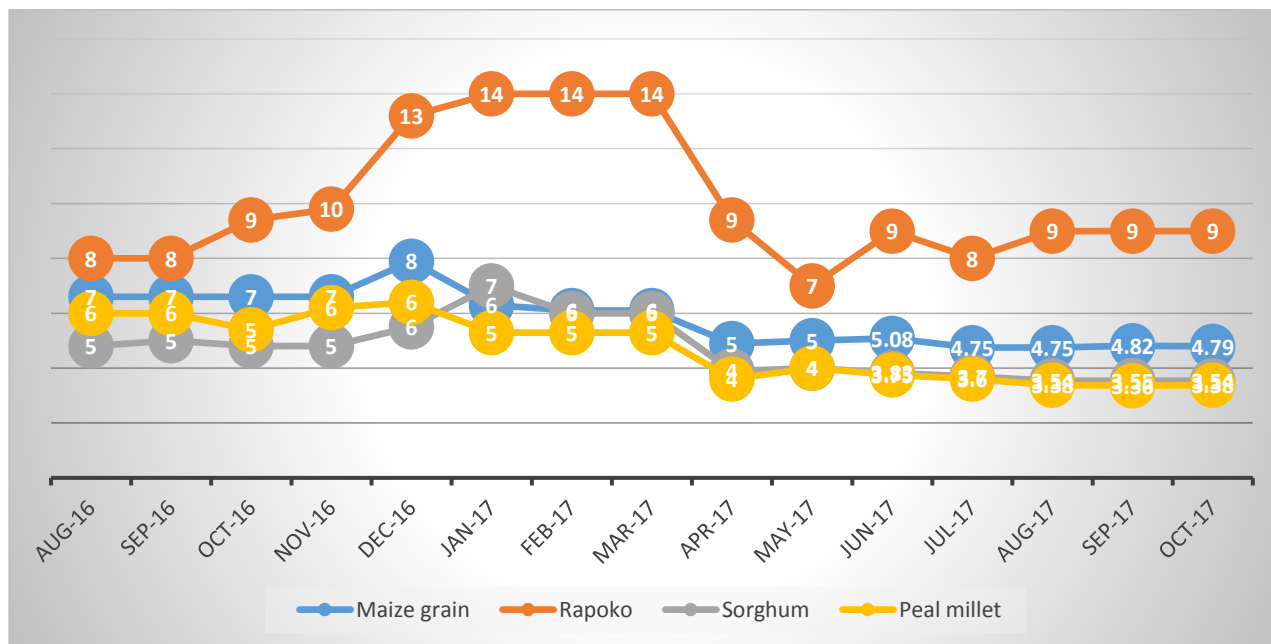


Figure 3: Crop prices in Mwenezi District, October 2017

3.3. Bubi District Overview (MELANA)

Indicator Class	Crisis Modifier Phase
Biophysical Indicators	Alert
Production Indicators	Normal
Access Indicators	Alarm
Trade Indicators	Normal

Biophysical Indicators

- Bubi district received no rains in October 2017.
- Pastures were observed to be **critically inadequate** with pastures having potential to only last 1-3 months.
- The state of safe water sources was **not reported this month**.

Production Indicators

- Irrigated crop condition remained **Good** across the district.
- Livestock condition was **fair** across the district.
- No cases of livestock poverty were reported.
- There were no major crop pests and diseases in the irrigated plots.
- A total of 256 cases of livestock diseases were reported in the district. These were mainly anthrax cases (170). The rest (86) of the cases were Other diseases comprising E. coli infection, swollen head syndrome, LSD, Pulp kidney, Gall sickness and Infection Coryza.
- No cases of common diarrhoea were reported.

Access Indicators

- Livestock trekking distance for water changed from the previous month's 2.47km to 5km, which is in the Alarm category.
- The number of meals per household remained at 2 per day.
- School attendance was reported to be Average with 60-80% attendance rate.

Biophysical Indicators	Value	Normal Value
Rainfall	14.6	< 100
Mid-season dry spells days		0-10
Pastures availability	2	Adequate (4)
State of water sources	No Data	Available (4)
Production Indicators	Value	Normal Value
Crop condition	4	4-Crops are healthy
Livestock body condition	2	Good (3)
Number livestock poverty deaths	0	0
Crops pest and diseases outbreaks	3	0
Reported Cases of Livestock Diseases	256	0
Reported Cases of Water-Borne Diseases	0	0
Access Indicators	Value	Normal Value
Distance to water sources for household use		
Water for livestock trekking distance	5	< 2km
Number of meals	2	3 or more
School attendance	No Data	Good (4)
Trade Indicators	Value	Normal Value
Cattle price	450	300-650
Goat price	40	30-60
Sheep price	50	40-200
Indigenous chicken price	5	4-10
Maize price	5	4-10
Sorghum price	6	4-10
Pearl millet price	6	4-10
Rapoko price	No Data	10-20

Trade Indicators

- The cattle prices were at average of \$450 per beast.
- Goat and sheep prices were at \$40 and \$50 per animal respectively.
- Indigenous chicken prices were averaging \$5 per bird in the district.
- Maize, sorghum and pearl millet were at \$5, \$6, and \$6 per bucket respectively.
- Rapoko was not available on the market. Trends in Bubi's crop prices are shown in Figure 3 below.

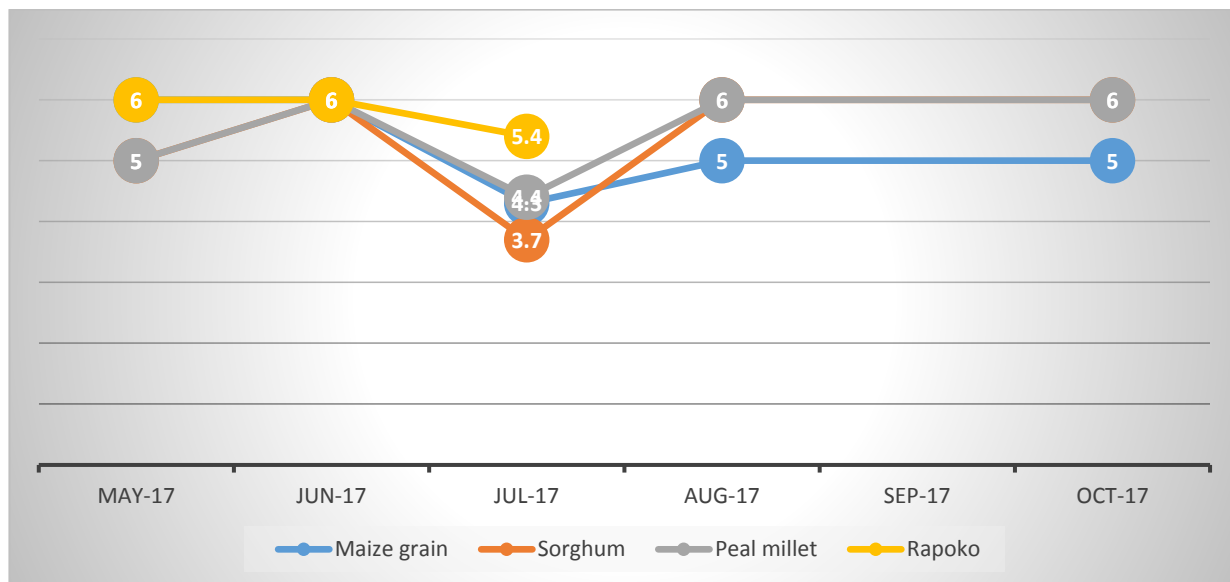


Figure 4: Crop prices in Bubi District, October 2017

3.4. Nkayi District Overview (MELANA)

Indicator Class	Crisis Modifier Phase
Biophysical Indicators	Alert
Production Indicators	Normal
Access Indicators	Normal
Trade Indicators	Normal

Biophysical Indicators

- Nkayi district received no rainfall in October.
- The pastures were reported to be **critically Inadequate** with potential to only last 1-3 months.

Production Indicators

- Irrigated crops were reported to be in fair condition across the district.
- Livestock condition was also recorded to be **Fair** with animals not in their best condition.
- There were no livestock poverty deaths cases.
- No crop pests and diseases were reported.
- Only one (1) case of lumpy skin was reported in Nkayi.
- There were 389 cases of diarrhoea diseases. Common diarrhoea dominated with 365 cases while the rest (24) were dysentery cases.

Access Indicators

- The average livestock trekking distance for water was **4km which is the Alert category**.
- Most households were having 3 meals a day which reflects that majority HHs were having access to food.
- School attendance remained at Good across the district

Trade Indicators

- Livestock were selling at \$350 for cattle, \$45 for Goats and \$50 for sheep per animal. Indigenous chickens were still selling at \$5 per bird.
- Average crop prices were not recorded for October.

Biophysical Indicators	Value	Normal Value
Rainfall	0	< 100
Mid-season dry spells days		0-10
Pastures availability	2	Adequate (4)
State of water sources	No Data	Available (4)
Production Indicators	Value	Normal Value
Crop condition	3	4-Crops are healthy
Livestock body condition	2	Good (3)
Number livestock poverty deaths	0	0
Crops pest and diseases outbreaks	3	0
Reported Cases of Livestock Diseases	2	0
Reported Cases of Water-Borne Diseases	389	0
Access Indicators	Value	Normal Value
Distance to water sources for household use		
Water for livestock trekking distance	4	< 2km
Number of meals	3	3 or more
School attendance	4	Good (4)
Trade Indicators	Value	Normal Value
Cattle price	350	300-650
Goat price	45	30-60
Sheep price	50	40-200
Indigenous chicken price	5	4-10
Maize price	No Data	4-10
Sorghum price	No Data	4-10
Pearl millet price	No Data	4-10
Rapoko price	No Data	10-20

3.5. Umguza District Overview (MELANA)

Indicator Class	Crisis Modifier Phase
Biophysical Indicators	Alert
Production Indicators	Normal
Access Indicators	Alert
Trade Indicators	Normal

Biophysical Indicators

- Umguza received no rainfall in October.
- The state of water was reported as **Inadequate with 30-65% of boreholes** being functional.

Production Indicators

- Crop condition was good in the irrigation facilities.
- Livestock condition was not reported this month.
- No livestock poverty deaths were reported.
- There were no crop pests and diseases during this month.
- No cases of livestock diseases were reported.
- There were no reported cases of diarrhoea diseases.

Access Indicators

- Average distances travelled for domestic for water was 2.5km.
- Livestock trekking distance for water was not reported.
- Most households were now having 2 meals per day and this present a slight decline from the last month's average of 3 meals per day.
- Data on school attendance was not available for this month.

Biophysical Indicators	Value	Normal Value
Rainfall	0	< 100
Mid-season dry spells days		0-10
Pastures availability		Adequate (4)
State of water sources	2	Available (4)
Production Indicators	Value	Normal Value
Crop condition	3	4-Crops are healthy
Livestock body condition		Good (3)
Number livestock poverty deaths	0	0
Crops pest and diseases outbreaks	3	0
Reported Cases of Livestock Diseases	0	0
Reported Cases of Water-Borne Diseases	0	0
Access Indicators	Value	Normal Value
Distance to water sources for households	2.5	< 2km
Water for livestock trekking distance		
Number of meals	2	3 or more
School attendance	No Data	Good (4)
Trade Indicators	Value	Normal Value
Cattle price	500	300-650
Goat price	50	30-60
Sheep price	60	40-200
Indigenous chicken price	7	4-10
Maize price	4	4-10
Sorghum price	6	4-10
Pearl millet price	6	4-10
Rapoko price	6	10-20

Trade Indicators

- All average livestock prices remained in the Normal category of the Crisis Modifier. Cattle were selling for \$500, Goats at \$50, sheep at \$60 and Indigenous chickens at \$7 per beast/bird.
- Average crop prices also remained in the Normal category except for Rapoko that was selling at below average prices.
- Maize, sorghum, pearl millet and rapoko were selling at \$4, \$6, \$6, and \$6 per bucket respectively. All these crops price reflect a decrease when compared to last month's figures.

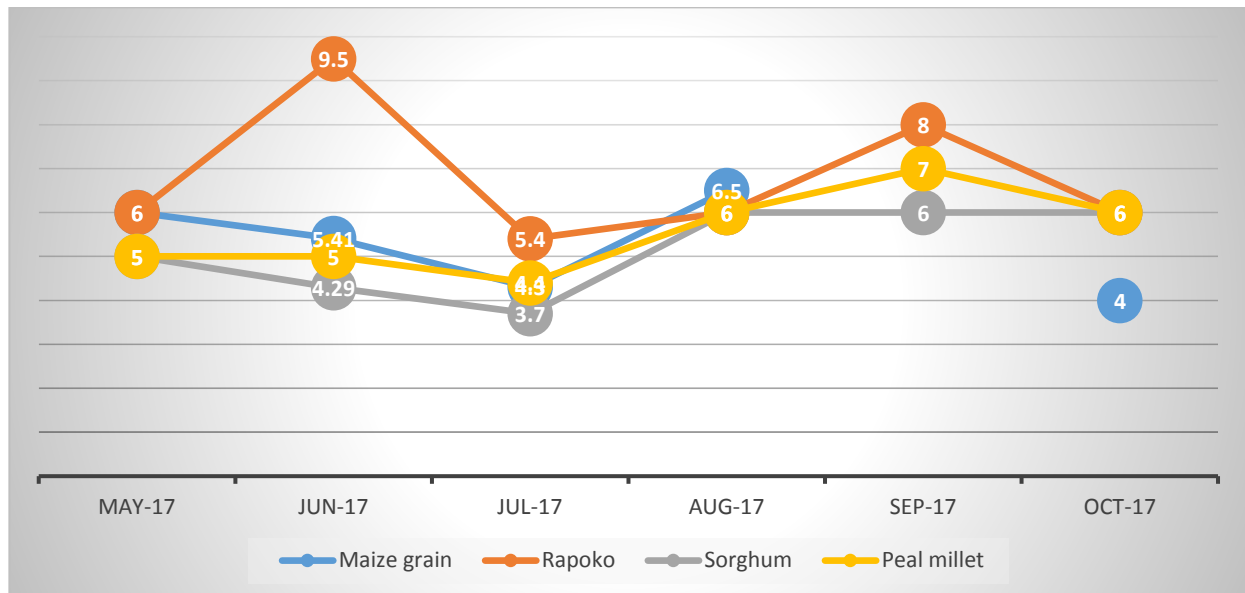


Figure 5: Crop prices in Umguza District, October 2017

3.6. Umzingwane District Overview (MELANA)

Indicator Class	Crisis Modifier Phase
Biophysical Indicators	Alert
Production Indicators	Normal
Access Indicators	Alert
Trade Indicators	Normal

Biophysical Indicators

- Umzingwane district received no rains in October 2017.
- Pastures were observed to be **critically inadequate** with pastures having potential to only last 1-3 months.
- Data on the state of safe water sources was not availed.

Production Indicators

- Irrigated crop condition remained **Good** across the district.
- Livestock condition was **Good** across the district.
- No cases of livestock poverty were reported.
- There were no major crop pests and diseases identified in the irrigated plots.
- No cases of livestock diseases were reported in the district.
- No cases of common diarrhoea were reported.

Access Indicators

- Livestock trekking distance for water was 2 km which is in the normal category.
- The number of meals per household improved to 3 per day. This is a n improvement from last month's average of 2 meals per day.
- School attendance was not reported.

Biophysical Indicators	Value	Normal Value
Rainfall	0	< 100
Mid-season dry spells days		0-10
Pastures availability	2	Adequate (4)
State of water sources	No Data	Available (4)
Production Indicators	Value	Normal Value
Crop condition	3	4-Crops are healthy
Livestock body condition	3	Good (3)
Number livestock poverty deaths	0	0
Crops pest and diseases outbreaks	3	0
Reported Cases of Livestock Diseases	0	0
Reported Cases of Water-Borne Diseases	0	0
Access Indicators	Value	Normal Value
Distance travelled by for domestic water		
Water for livestock trekking distance	2	< 2km
Number of meals	3	3 or more
School attendance	No Data	Good (4)
Trade Indicators	Value	Normal Value
Cattle price	450	300-650
Goat price	50	30-60
Sheep price	80	40-200
Indigenous chicken price	7	4-10
Maize price	5	4-10
Sorghum price	8	4-10
Pearl millet price	8	4-10
Rapoko price	8	10-20

Trade Indicators

- All average livestock prices remained in the Normal category of the Crisis Modifier. Cattle were selling for \$450, Goats at \$50, sheep at \$80 per animal while and Indigenous chickens were selling for \$7 per beast.
- Average crop prices also remained in the Normal category except for Rapoko that was selling at below average prices.
- Maize, sorghum, pearl millet and rapoko were selling at \$5, \$8, \$8, and \$8 per bucket respectively. All these crops price reflect a slight decrease when compared to last month's figures.

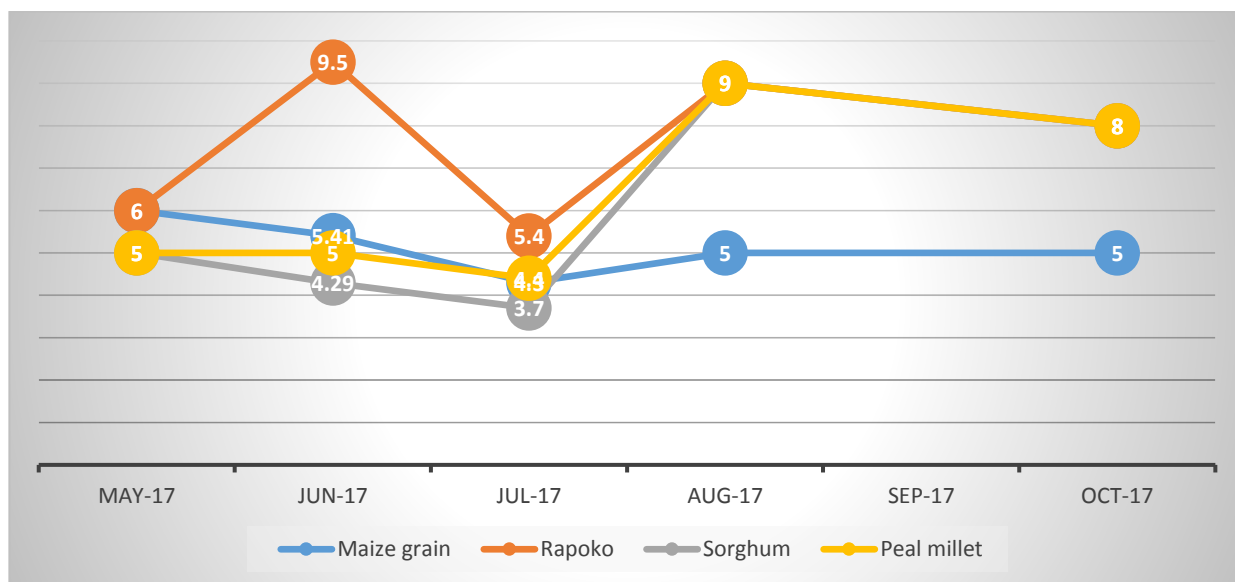


Figure 6: Crop prices in Umzingwane District, October 2017

3.7. Binga District Overview (ZVA)

Indicator Class	Crisis Modifier Phase
Biophysical Indicators	Alert
Production Indicators	Normal
Access Indicators	Alert
Trade Indicators	Normal

Biophysical Indicators

- There was no rainfall in Binga this month.
- Pastures were reported to be **inadequate** with potential to only last 3-6 months.
- Water sources were **fairly available** with 65-85% of the boreholes being functional.

Production Indicators

- The general crop condition in irrigation schemes are reported to be **good**. Notable examples of irrigated plots were at Nabusenga (8 Ha) and Lungwalala Irrigation scheme (8 Ha) for winter wheat. At the Bulawayo Kraal irrigation, communities had seed maize covering 100ha.
- Livestock body condition was recorded as **Fair** across the district. Most have dried at this period of the year hence pastures are not at their full nutritional potential. Livestock not significantly emaciated presently but there are signs of deterioration.
- There were no livestock poverty deaths in the district, this month.
- There were no reported cases of crop pests and diseases but weed infestation affected 2-30% of copped fields. These were categorised as Alert.
- No cases of livestock and water-borne diseases were reported.

Biophysical Indicators	Value	Normal Value
Rainfall	0	< 100
Mid-season dry spells days		0-10
Pastures availability	3	Adequate (4)
State of water sources	3	Available (4)
Production Indicators	Value	Normal Value
Crop condition	3	4-Crops are healthy
Livestock body condition	2	Good (3)
Number livestock poverty deaths	0	0
Crops pest and diseases outbreaks	2	0
Reported Cases of Livestock Diseases	0	0
Reported Cases of Water-Borne Diseases	0	0
Access Indicators	Value	Normal Value
Distance travelled by for domestic water	1	< 2km
Water for livestock trekking distance	3	< 2km
Number of meals	3	3 or more
School attendance		Good (4)
Trade Indicators	Value	Normal Value
Cattle price	350	300-650
Goat price	25	30-60
Sheep price	30	40-200
Indigenous chicken price	5	4-10
Maize price	5	4-10
Sorghum price	4	4-10
Pearl millet price	4	4-10
Rapoko price		10-20

Access Indicators

- The distance to water sources for households remained at 1km. Households still have adequate water supply for domestic use.
- Livestock trekking distance was reported to be 3km. Most water sources have started drying up due to the high temperatures hence the long distance to water sources.
- Most households were having 3 meals per day showing access to food for most families.

Trade Indicators

- Cattle were selling for \$350, Goats at \$25, sheep at \$30 per animal while Indigenous chickens were selling at \$5 each per bird.
- All available crop prices were in the normal class of the Crisis Modifier. Maize, sorghum and pearl millet were selling at an average of \$5, \$4 and \$4 per bucket.
- Just like the previous month, there was no rapoko in the market hence no prices were recorded.

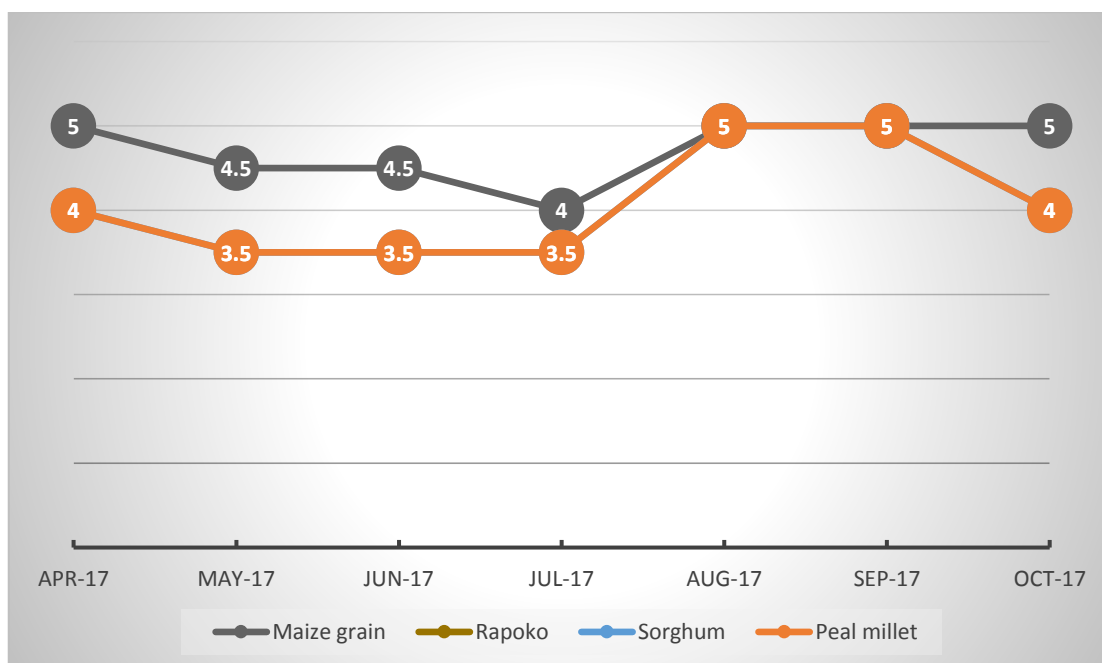


Figure 7: Crop prices in Binga District, October 2017

3.8. Kariba District (ZVA)

Indicator Class	Crisis Modifier Phase
Biophysical Indicators	Alert
Production Indicators	Alert
Access Indicators	Alert
Trade Indicators	Normal

Biophysical Indicators

- Kariba district received no rainfall during the month of October.
- Pastures were **critically inadequate** across the district with available pasture having potential to last 1-3months.
- The state of water sources was reported to be **fairly available with 65-85% of boreholes** being functional.

Production Indicators

- Livestock condition was recorded as Fair and this is attributed to drying pastures.
- No livestock were lost to poverty death.
- There were no crop pests and diseases reported.
- The number of livestock pests and diseases remained high (1590 cases) in the district especially these diseases; Newcastle (1512), Lumpy skin (5), Fowl pox (15), ORF (5), Red water (4), Mastitis (1), Rabies (2) and Heartwater (8). These diseases were classified as Alarm due to their effect to livestock numbers. Vaccinations are ongoing through the Department of Livestock and Veterinary Services (DLVS) but not contained. There were 95 cases treated, 43 deaths recorded and 1417 unattended cases
- No cases of water-borne diseases were reported this month.

Biophysical Indicators	Value	Normal Value
Rainfall	10	< 100
Mid-season dry days		0-10
Pastures availability	2	Adequate (4)
State of water sources	3	Available (4)
Production Indicators	Value	Normal Value
Crop condition		4-Crops are healthy
Livestock body condition	2	Good (3)
Number livestock poverty deaths	0	0
Crops pest and diseases outbreaks	3	0
Reported Cases of Livestock Diseases	1590	0
Reported Cases of Water-Borne Diseases	0	0
Access Indicators	Value	Normal Value
Distance to household water	4.5km	< 2km
Water for livestock trekking distance	5.5	< 2km
Number of meals	3	3 or more
School attendance	4	Good (4)
Trade Indicators	Value	Normal Value
Cattle price	400	300-650
Goat price	25	30-60
Sheep price	40	40-200
Indigenous chicken price	5	4-10
Maize price	4	4-10
Sorghum price	5	4-10
Pearl millet price		4-10
Rapoko price	17	10-20

Access Indicators

- Households were travelling an average of 4.5km to collect water for domestic use.
- Livestock trekking distance for water was 5.5km which was considerably high.
- Most households were still having 3 meals a day, a good indicator for access to food.
- School attendance was also reported to be **Good**.

Trade Indicators

- Cattle, goats, sheep and indigenous chickens were selling at \$400, \$25, \$40 and \$5 respectively per animal or bird. All prices were in the Normal category except for goat prices.
- Prices of maize, sorghum and Rapoko remained at \$4, \$5, and \$17 respectively when compared to last month's figures. Pearl millet remained unavailable on the market.
- These crop prices were all in the Normal category and the figure below show price trends.

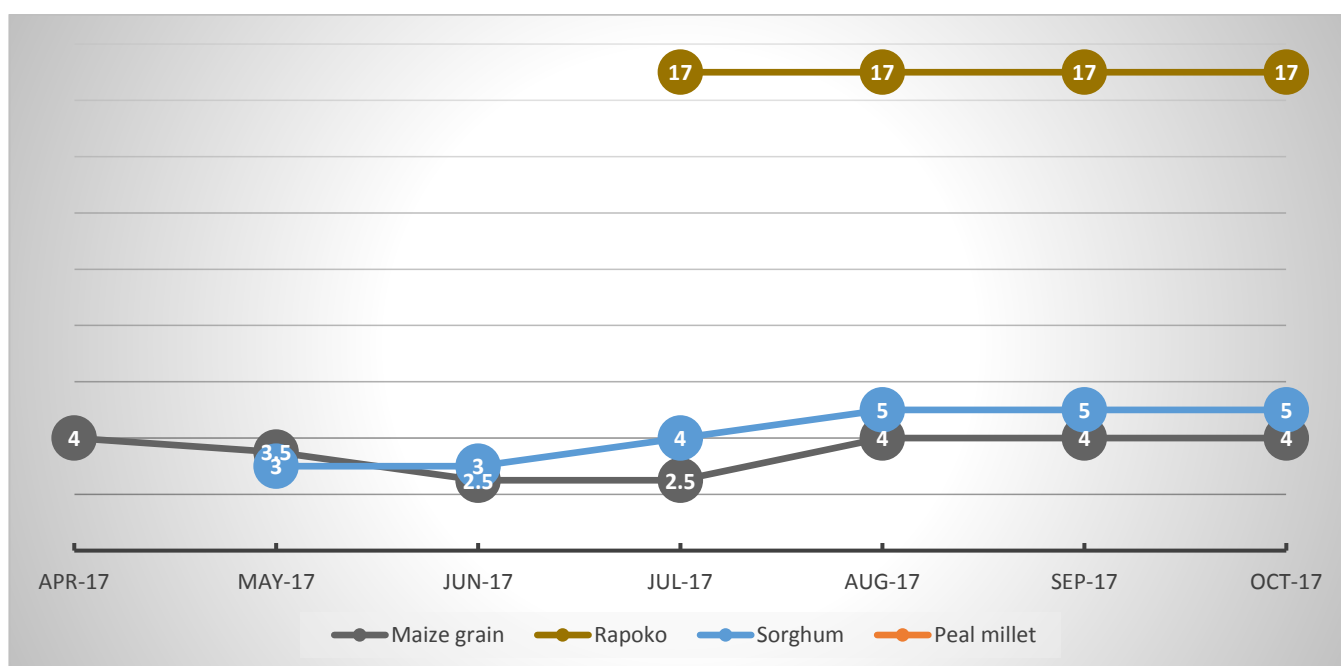


Figure 8: Crop prices in Kariba District, October 2017

3.9. Mbire District Overview (ZVA)

Indicator Class	Crisis Modifier Phase
Biophysical Indicators	Alert
Production Indicators	Normal
Access Indicators	Alert
Trade Indicators	Alert

Biophysical Indicators

- Mbire received no rainfall in October.
- The pastures were reported to be **critically inadequate** with potential to only last 1-3 months.
- Water resources were also reported to be **fairly available** with 65-85% of boreholes being functional.

Production Indicators

- Crops were not its best condition, especially in the government controlled farms. The livestock condition remained Good across the district. Cattle were utilising crop residues from cotton and maize fields.
- No livestock poverty deaths were reported in the October.
- No crop pests and diseases were reported during this month.
- of reported cases of livestock diseases also dropped into a normal with 0 cases.

Access Indicators

- The distance to water sources for domestic uses remained at an average of 2km.
- Livestock trekking distance was 5km and was classified as Alarm.
- Most households had access to food as shown by the 3 meals consumed per day.
- Figures on school attendance were not available for the month.

Biophysical Indicators	Value	Normal Value
Rainfall	12.4	< 100
Mid-season dry spells days		0-10
Pastures availability	2	Adequate (4)
State of water sources	3	Available (4)
Production Indicators	Value	Normal Value
Crop condition	2	4-Crops are healthy
Livestock body condition	2	Good (3)
Number livestock poverty deaths	0	0
Crops pest and diseases outbreaks	2	0
Reported Cases of Livestock Diseases	0	0
Reported Cases of Water-Borne Diseases	0	0
Access Indicators	Value	Normal Value
Water for domestic use	2	< 2km
Water for livestock trekking distance	5	< 2km
Number of meals	3	3 or more
School attendance	No Data	Good (4)
Trade Indicators	Value	Normal Value
Cattle price	250	300-650
Goat price	20	30-60
Sheep price	35	40-200
Indigenous chicken price	5	4-10
Maize price	3	4-10
Sorghum price	3	4-10
Pearl millet price	6	4-10
Rapoko price	No Data	10-20

Trade Indicators

- The prices of domestic animals were in the Alert category with cattle at \$250, goats at \$20 and sheep at \$35 per animal. Indigenous chickens were in the normal at \$5 per bird.
- Maize, sorghum and pearl millet prices were at \$5, \$3 and \$3 per bucket respectively (see Figure 2 below). There was no rapoko on the market.
- The diagram below illustrates the trends in crop prices over the past 5 months in Mbire.

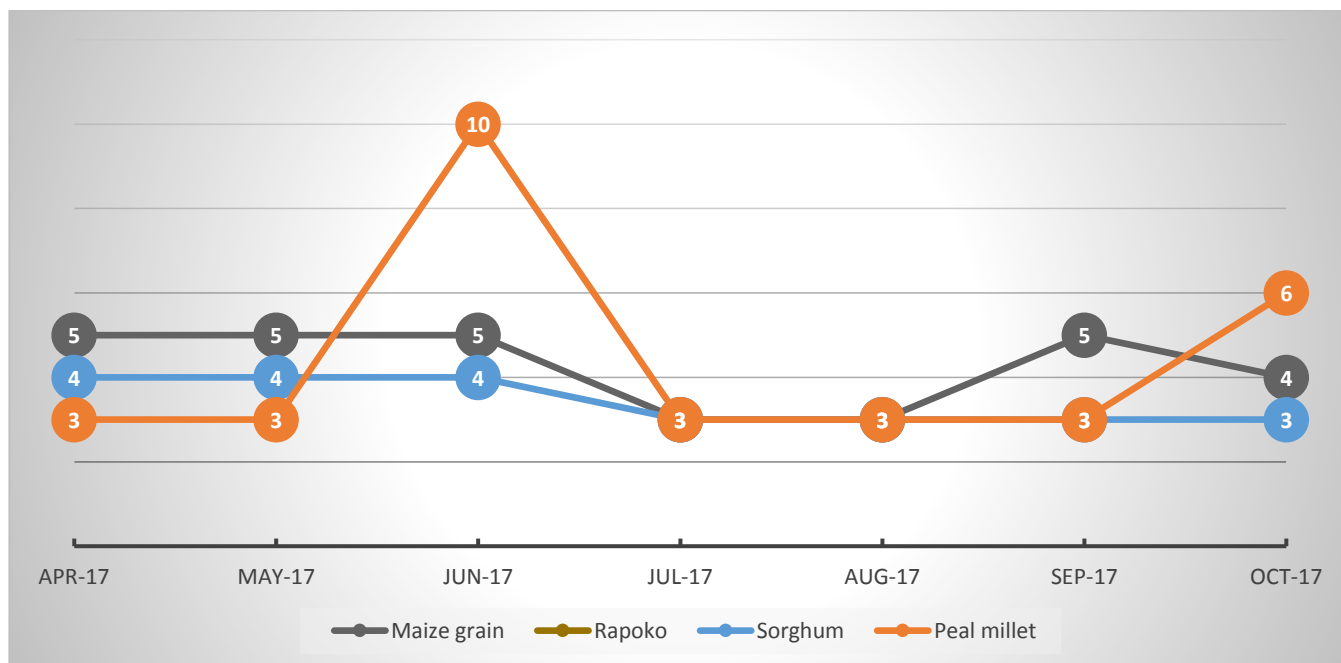


Figure 9: Crop prices in Mbire Districts (October 2017)

Annex 1: Flood monitoring thresholds for water level in selected rivers

Station number	River	Site	Province	Maximum flow/level	Unit	Normal	Alert Trigger 1	Alarm Trigger 2	Emergency Trigger 3
A38	Gwayi	Dahlia	Mat North	147	m ³ /s	<66.15	66.15	88.2	117.6
B35	Limpopo	Beit Bridge	Mat South	6	m ³ /s	<2.7	2.7	3.6	4.8
C109	Musengezi	Chidodo	Mash Central	7.2	m ³ /s	<3.24	3.24	4.32	5.76
C59	Sanyati	Copper Queen	Midlands	2320	m ³ /s	<1044	1044	1392	1856
C61	Manyame	Chinhoyi Bridge	Mash West	16.5	m ³ /s	<7.425	7.425	9.9	13.2
C68	Musengezi	Centenary	Mash Central	80.7	m ³ /s	<36.315	36.315	48.42	64.56
D75	Mazowe	Mazowe Bridge	Mash Central	577	m ³ /s	<259.65	259.65	346.2	461.6
E130	Odzi	Odzi Gorge	Manicaland	383	m ³ /s	<172.35	172.35	229.8	306.4
E21	Save	Condo Dam	Manicaland	2853	m ³ /s	<1283.85	1283.85	1711.8	2282.4
E74	Runde	Confluence with Tokwe	Masvingo	2021	m ³ /s	<909.45	909.45	1212.6	1616.8
ZGP25	Zambezi	Victoria Falls	Mat North	9352	m ³ /s	<4208.4	4208.4	5611.2	7481.6
Crisis modifier range						< 45%	45.1%<X<60	60.1%<X<80%	< 80.1%